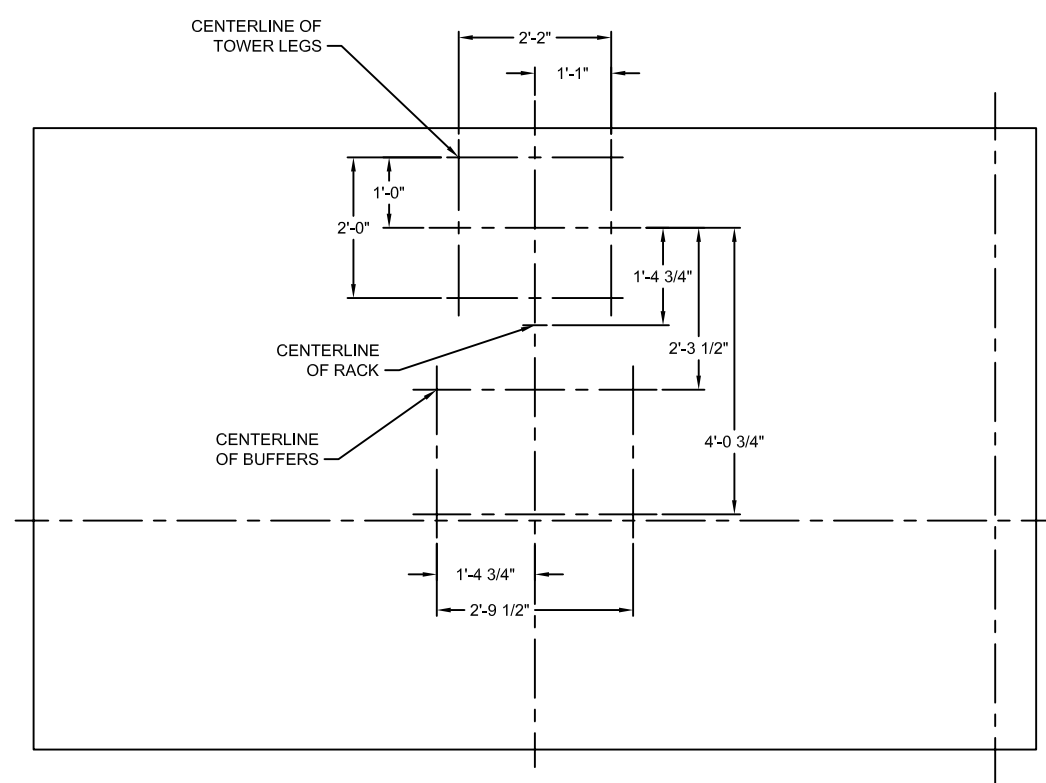
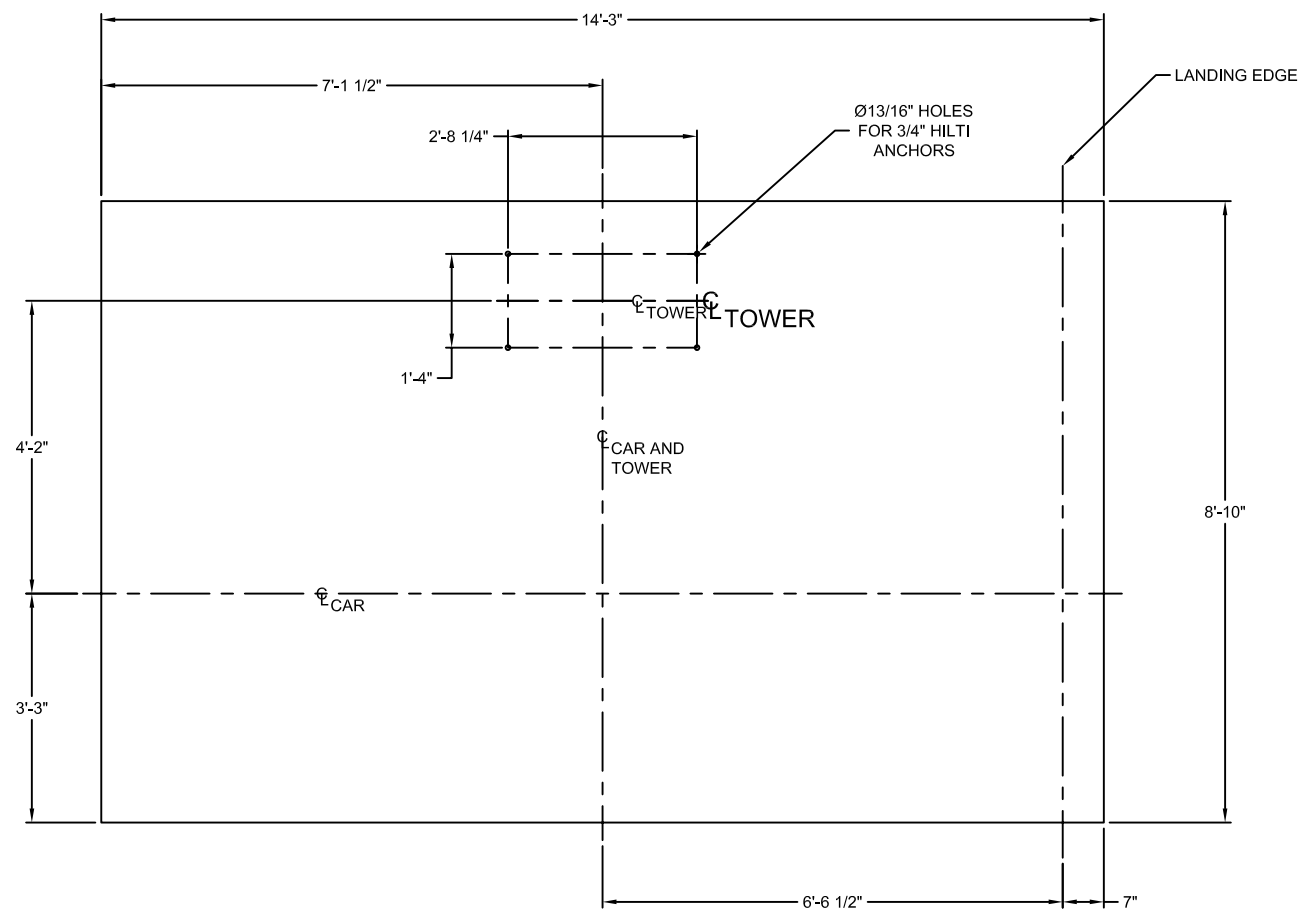
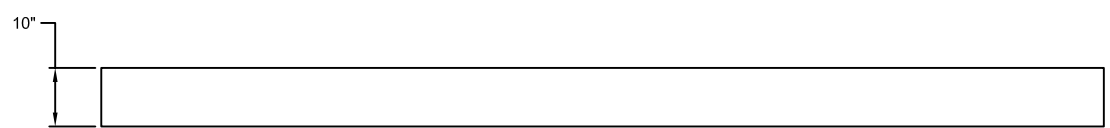


DWG NO.	REV.	1
REVISION HISTORY		
REV	ECN NO	DESCRIPTION
A		
CHANGED BY	DATE	APPROVED BY



LOCATION OF LOAD POINTS

NOTE:
FOR MINIMUM SOIL BEARING CAPACITY OF 1000 Lb/Sq Ft THE BASE PAD SHOULD BE 10" THICK OF 4000 PSI CONCRETE WITH A SINGLE MAT OF No 4 REBAR ON 12" CENTERS LOCATED 3" UP FROM THE BOTTOM.



BASE PAD DIMENSIONS

<small>THIS DOCUMENT CONTAINS PROPRIETARY INFORMATION AND MAY BE DISCLOSED TO OTHERS FOR ANY PURPOSE, USE FOR MANUFACTURING PURPOSES WITHOUT WRITTEN PERMISSION FROM CHAMPION ELEVATORS INC.</small>	FILE NAME:	UNLESS OTHERWISE SPECIFIED ALL DIMENSIONS ARE IN INCHES.	APPROVALS	DATE		Champion Elevators, Inc. P.O. Box 12869 Houston, TX 77217 Phone: 713-640-8500 Fax : 713-640-8519
		.X ±.030 FLAME CUT: ±1/16 .XX ±.015 R1/8 MIN CORNER .XXX ±.005 SURFACE FINISH: ANGLES ±1° 125/ FRACTIONAL ±1/32 BREAK ALL SHARP EDGES DO NOT SCALE DRAWING UNLESS OTHERWISE SPECIFIED ALL WELDS SHALL CONFORM TO AWS CODE D1.1 OR D1.2 MATERIAL:	DRAWN CHECKED ENGR MFG	01-20-03		
<small>THIS ANGLE PROJECTION</small>	DASH NO.	US-60-1RNU	TITLE		BASE PAD LAYOUT US-60-1RNU	
	NEXT ASSEMBLY	WHERE USED	SIZE	DWG NO.	REV.	
			D		A	
			SCALE: 1:16	CALC WT:	SHEET 1 OF 1	