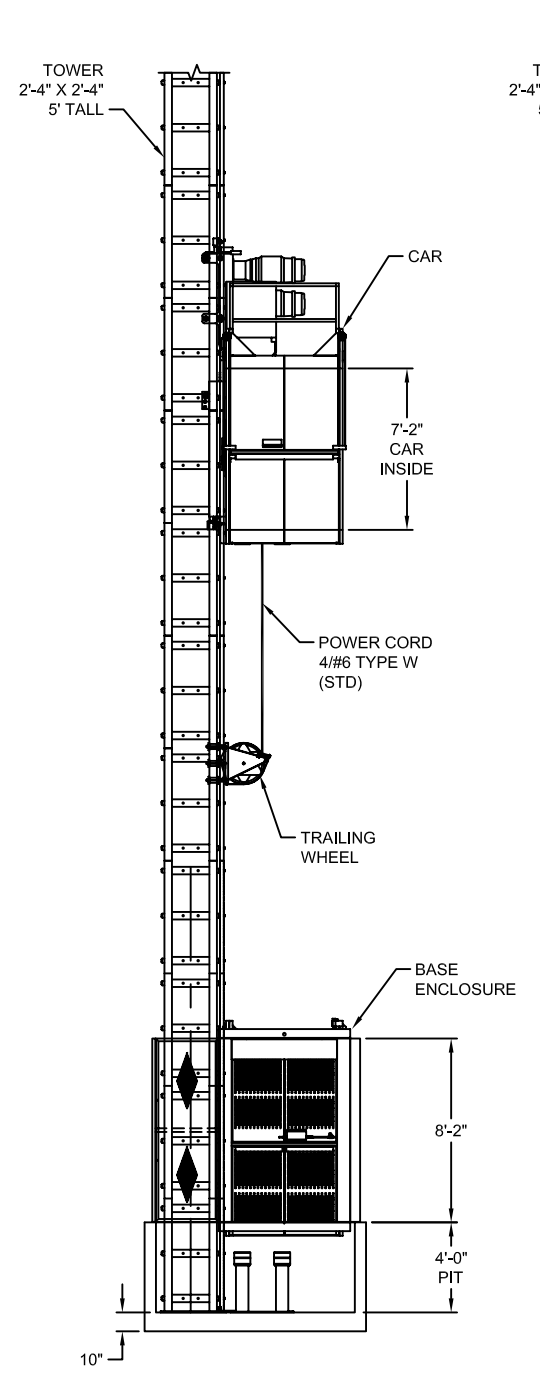
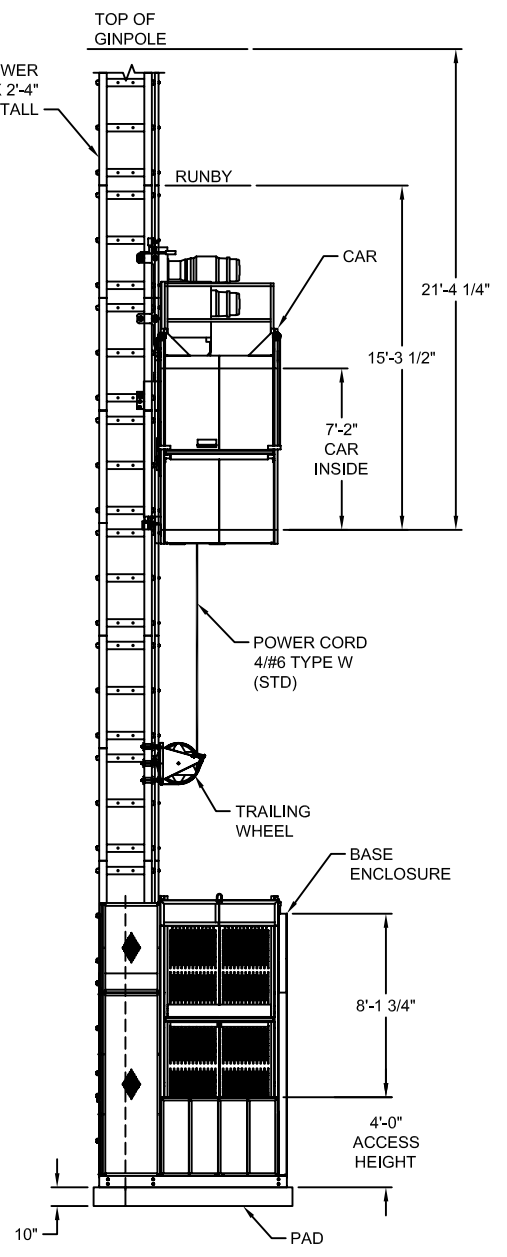


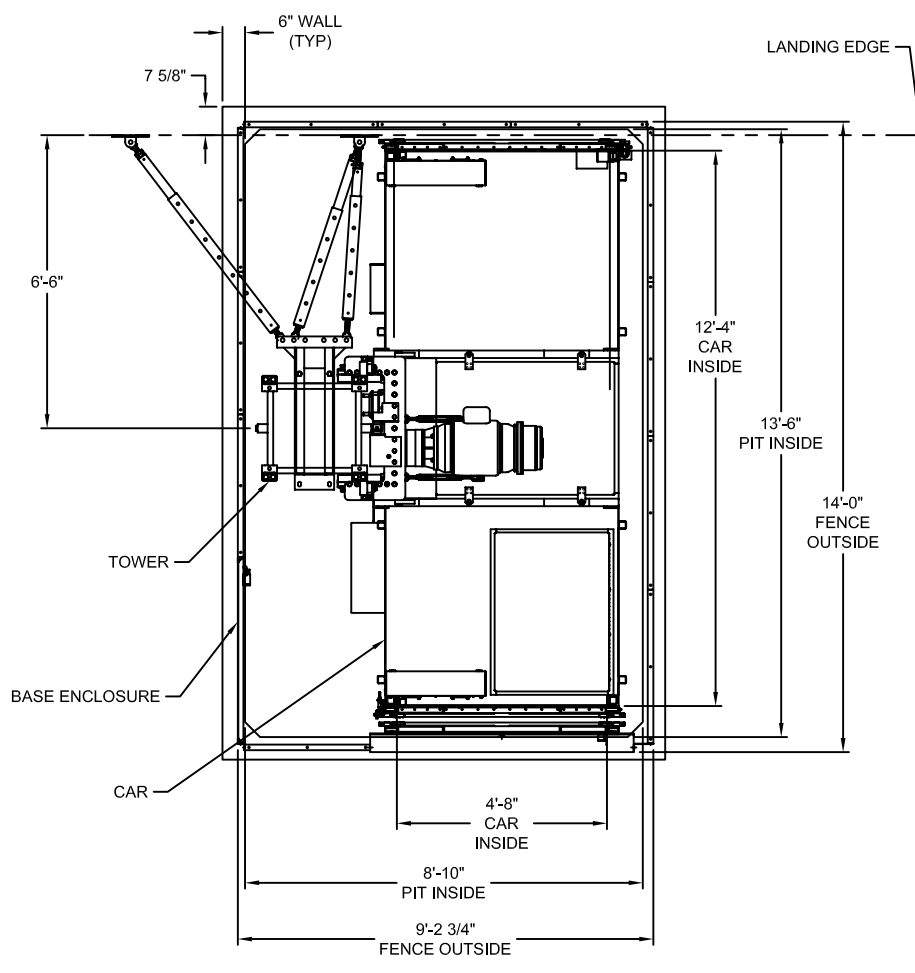
DWG NO.	REV.	B	1
REVISION HISTORY			
REV	ECN NO	DESCRIPTION	CHANGED BY DATE APPROVED BY DATE
A			
B		ADD VIEWS WITH PIT.	TLT 07-24-03



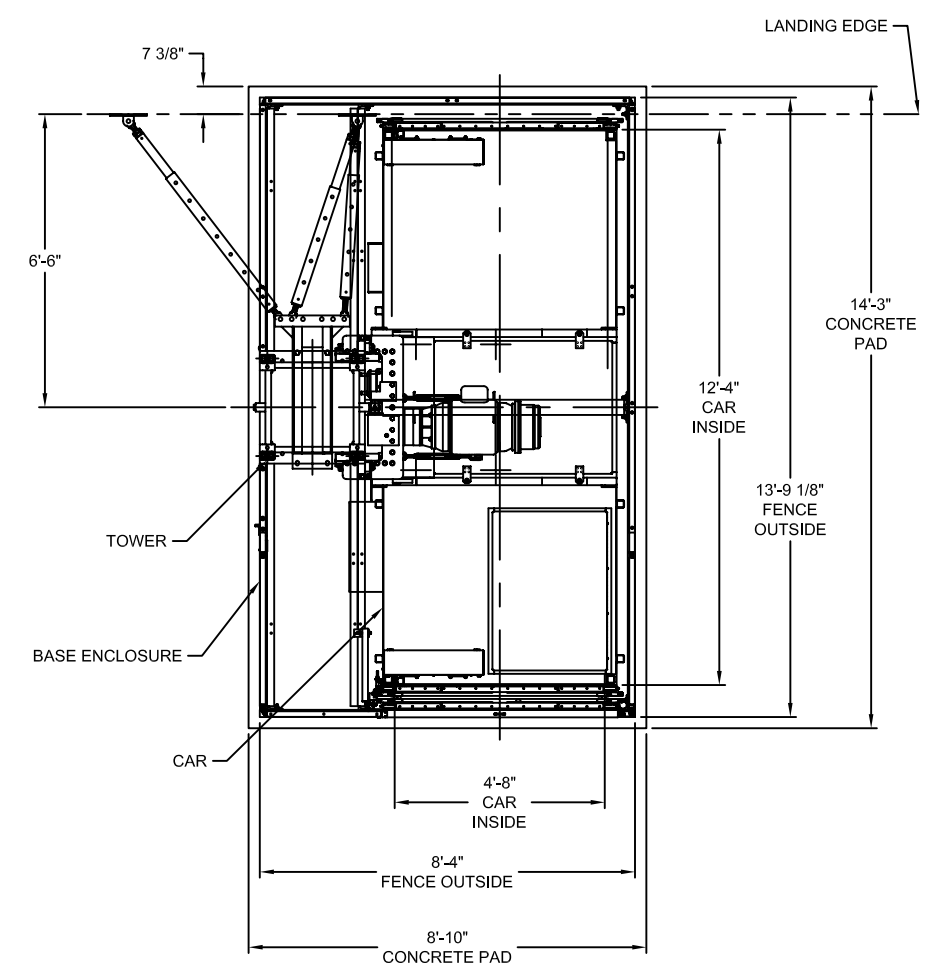
ELEVATION VIEW WITH PIT



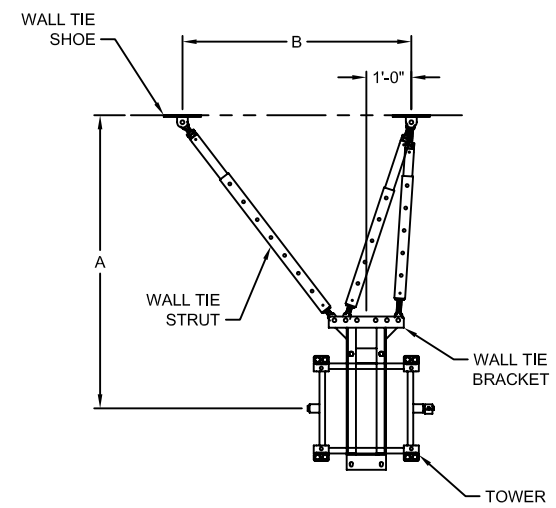
ELEVATION VIEW WITH PAD



PLAN VIEW WITH PIT (SCALE 2X)



PLAN VIEW WITH PAD (SCALE 2X)



WALL TIE SPREAD (SCALE 2X)

GENERAL NOTES:

- FOR MINIMUM SOIL BEARING CAPACITY OF 1000 Lb./Sq. Ft THE BASE PAD SHOULD BE 10" THICKNESS OF 4000 PSI CONCRETE WITH A SINGLE MAT OF No. 4 REBAR ON 10" CENTERS LOCATED 3" UP FROM THE BOTTOM.
- MAX. TOWER HEIGHT, 600 FT. (FOR HIGHER TOWERS, CONSULT CHAMPION ELEVATORS, INC., ENGINEERING.)
- WALL TIE ELEVATIONS NOT TO EXCEED 30' BETWEEN WALL TIE SETS. (FOR SPECIAL WALL TIE ARRANGEMENTS, CONSULT CHAMPION ELEVATORS, INC., ENGINEERING.)
- ANCHOR THE BASE TOWER TO THE PAD USING 4 HILTI KWIK-BOLT II 3/4" X 8" CONCRETE ANCHORS WITH A 4 3/4" EMBEDMENT.
- WALL TIE SHOES MAY BE WELDED OR BOLTED. WHEN WELDING, USE A MINIMUM OF 16" OF 1/4" FILLET WELD. WHEN BOLTING TO CONCRETE USE HILTI KWIK-BOLT II 1" X 9" CONCRETE ANCHORS WITH A 6" EMBEDMENT. WHEN BOLTING TO STEEL, THROUGH-BOLT WITH 1" GRADE 5 BOLTS.
- 3/4" BOLTS MAY BE USE ON WALL TIE SHOES WITH CHAMPION ELEVATORS, INC. ENGINEERING APPROVAL. WHEN USING 3/4" BOLTS ON WALL TIE SHOES, USE PLATE WASHERS.

SPECIFICATIONS

CHAMPION MODEL : US-60-1RNU  
 CAPACITY : 6000 LBS. OR 30 WORKERS  
 SPEED : 175 FPM  
 DRIVE MOTOR : (2) 35 HP MOTORS  
 BRAKE : (2) 295 LB. FT. MULTIPLE DISC  
 GEAR BOX : 24:1 RATIO  
 ELECTRICAL : 480 V, 60 HZ., 3 PHASE  
 FULL LOAD CURRENT : 89 AMPS  
 KVA : 75  
 SERVICE : 100 AMPS

"A"	"B"
6'-6"	5'-1"
6'-9"	5'-3"
7'-3"	5'-7"
7'-9"	5'-11 5/8"
8'-3"	6'-4 1/4"
8'-9"	6'-8 3/4"
9'-3"	7'-1 3/8"
9'-9"	7'-3"

THIS DOCUMENT CONTAINS PROPRIETARY INFORMATION AND MAY NOT BE DISCLOSED TO OTHERS FOR ANY PURPOSE, USE ONLY FOR MANUFACTURING PURPOSES UNLESS OTHERWISE SPECIFIED FROM CHAMPION ELEVATORS INC.

FILE NAME:	UNLESS OTHERWISE SPECIFIED ALL DIMENSIONS ARE IN INCHES. TOLERANCES ARE: X ±.030 FLAME CUT: ±1/16 JOK ±.015 R1/8 MIN CORNER JOK ±.005 SURFACE FINISH: ANGLES ±1' 125/16 FRACTIONAL ±1/32	APPROVALS DRAWN TLT 07-10-03 CHECKED ENGR MFG	DATE
DASH NO., NEXT ASSEMBLY	WHERE USED	FINISH:	

Champion Elevators, Inc.  
 P.O. Box 12869  
 Houston, TX 77217  
 Phone: 713-640-8500  
 Fax: 713-640-8519

**CHAMPION ELEVATOR**

TITLE: **OUTLINE DRAWING US-60-1RNU**

SIZE: D DWG NO.: B  
 SCALE: 1:50 CALC WT: SHEET 1 OF 1